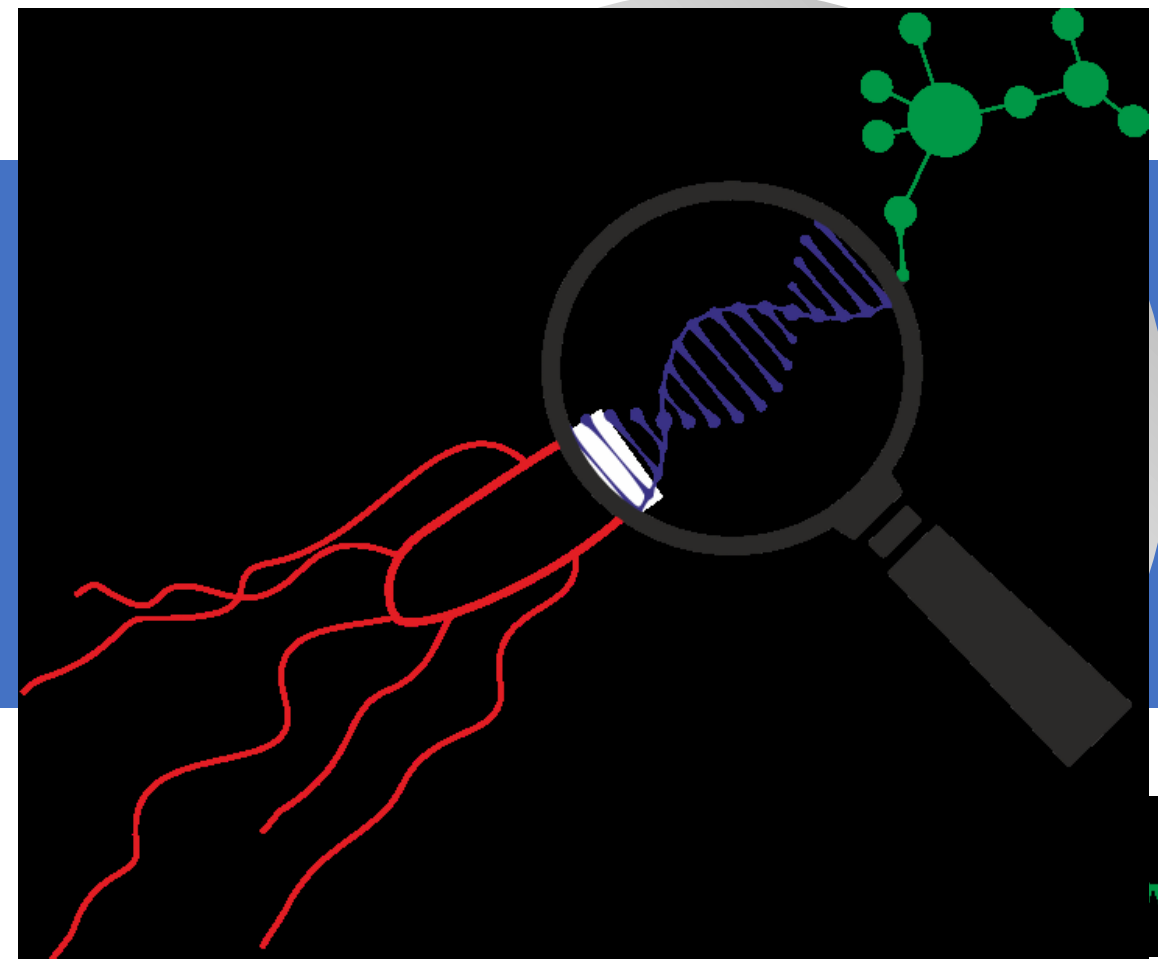


GenoSalmSurv screencasts



GenoSalmSurv screencasts

das Projekt

1

die Pipelines

AQUAMIS und die QC Entscheidung

Allele calling mit chewieSnake

Gemeinsame GenoSalmSurv Datenbank

Metachewiereport + Interpretation

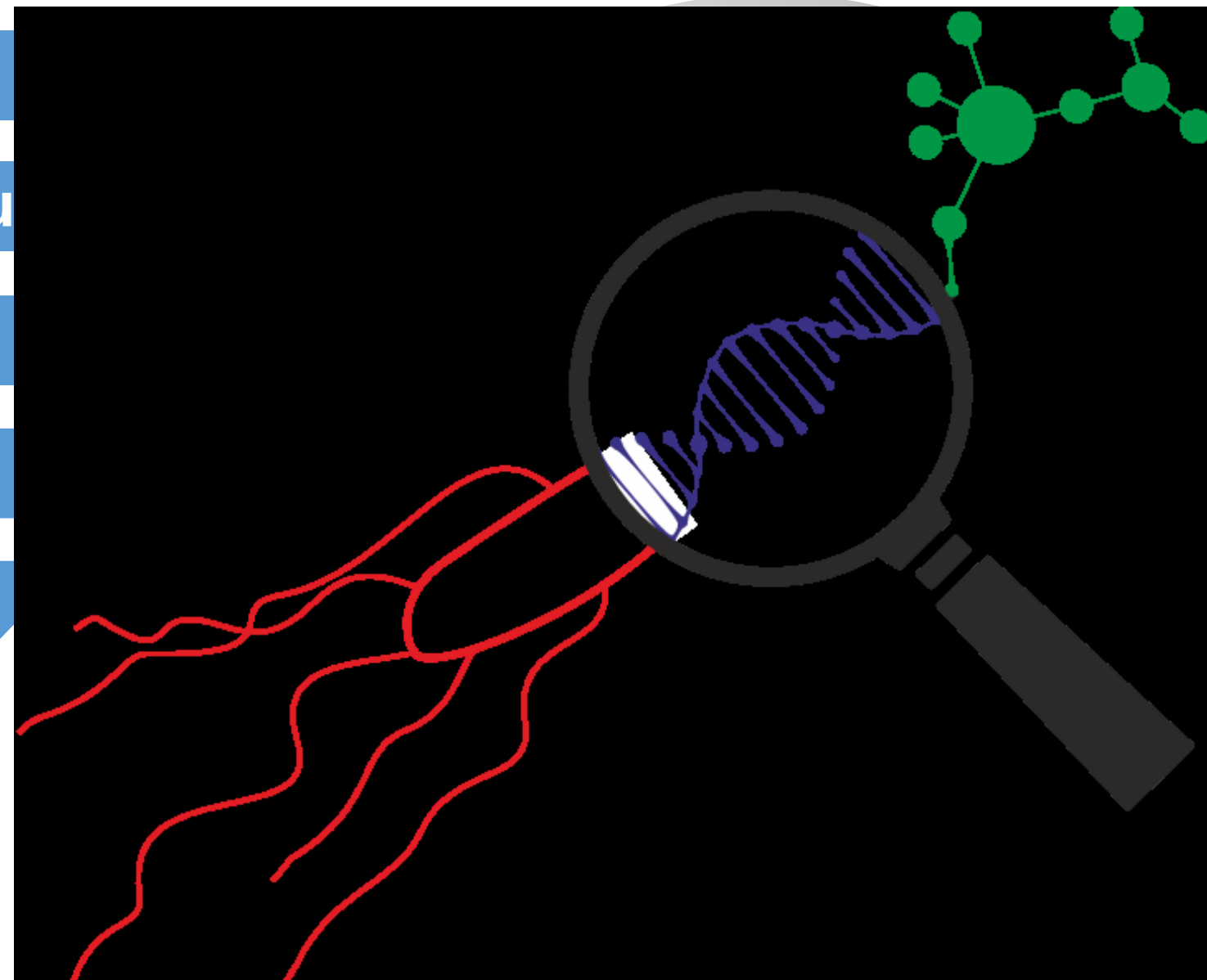
6

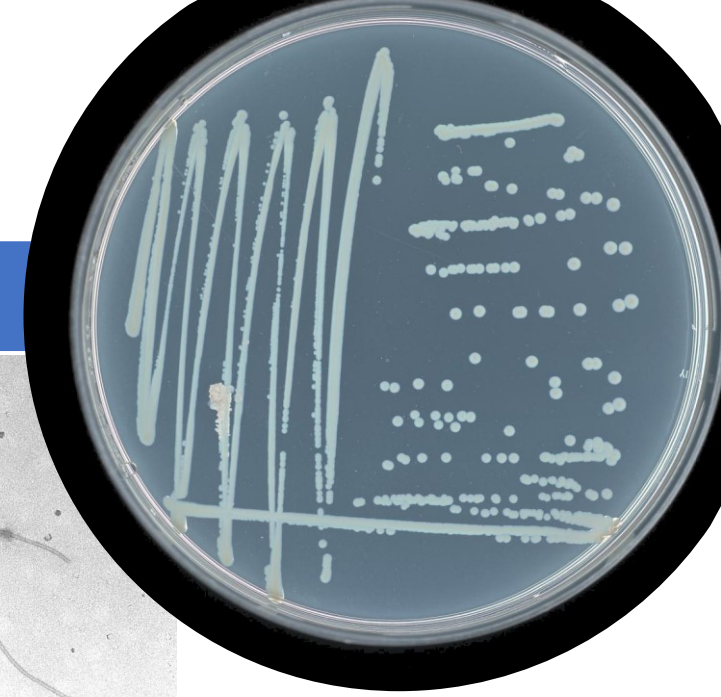
Demo einer Ausbruchsanalyse

7

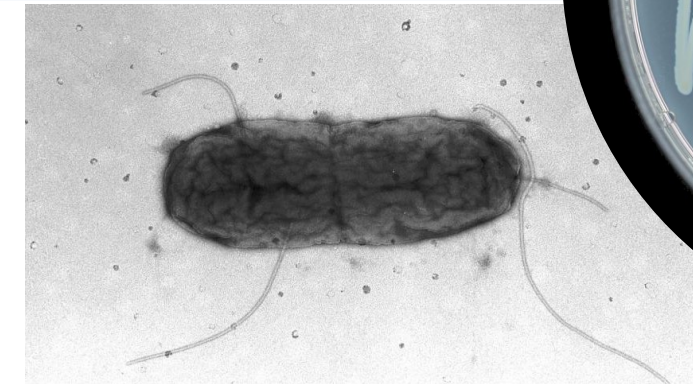
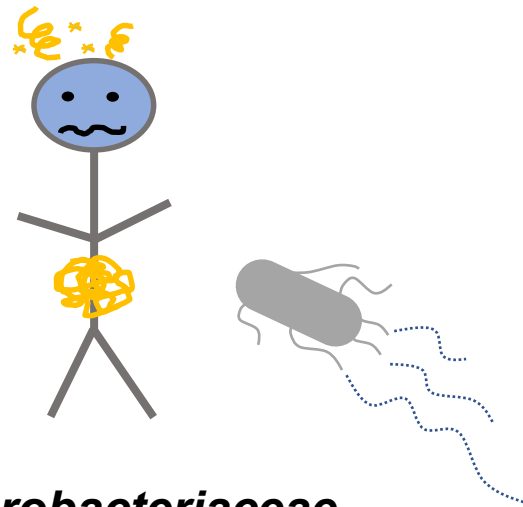
Installationshilfe

8





Salmonella



Familie:

Enterobacteriaceae

Genus / Gattung:

Salmonella

Spezies:

S. bongori

S. enterica

Subspezies:

enterica (I)

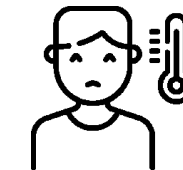
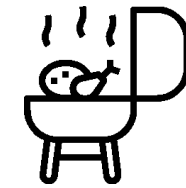
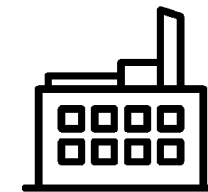
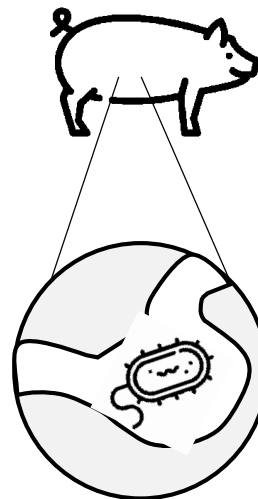
salamae (II)

diarizonae (IIIb)

arizonae (IIIa)

houtenae (IV)

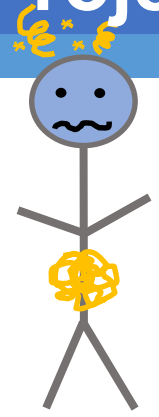
indica (VI)



Salmonellose



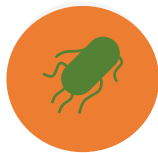
Standardverfahren



Labordiagnostik zur
Typisierung des
Ausbruchsstamms

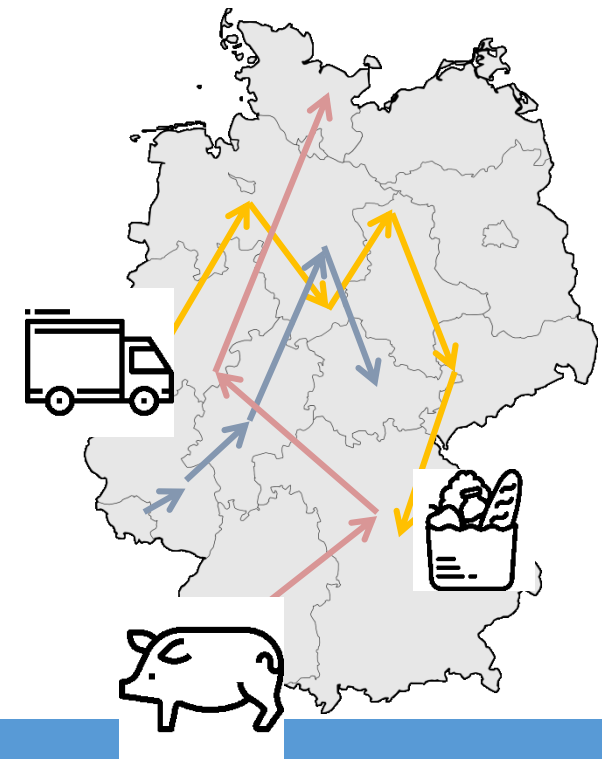


ATGCGGTTGTCTGCA
TTTATATGCATGC
CGCAAGTGCGCATG



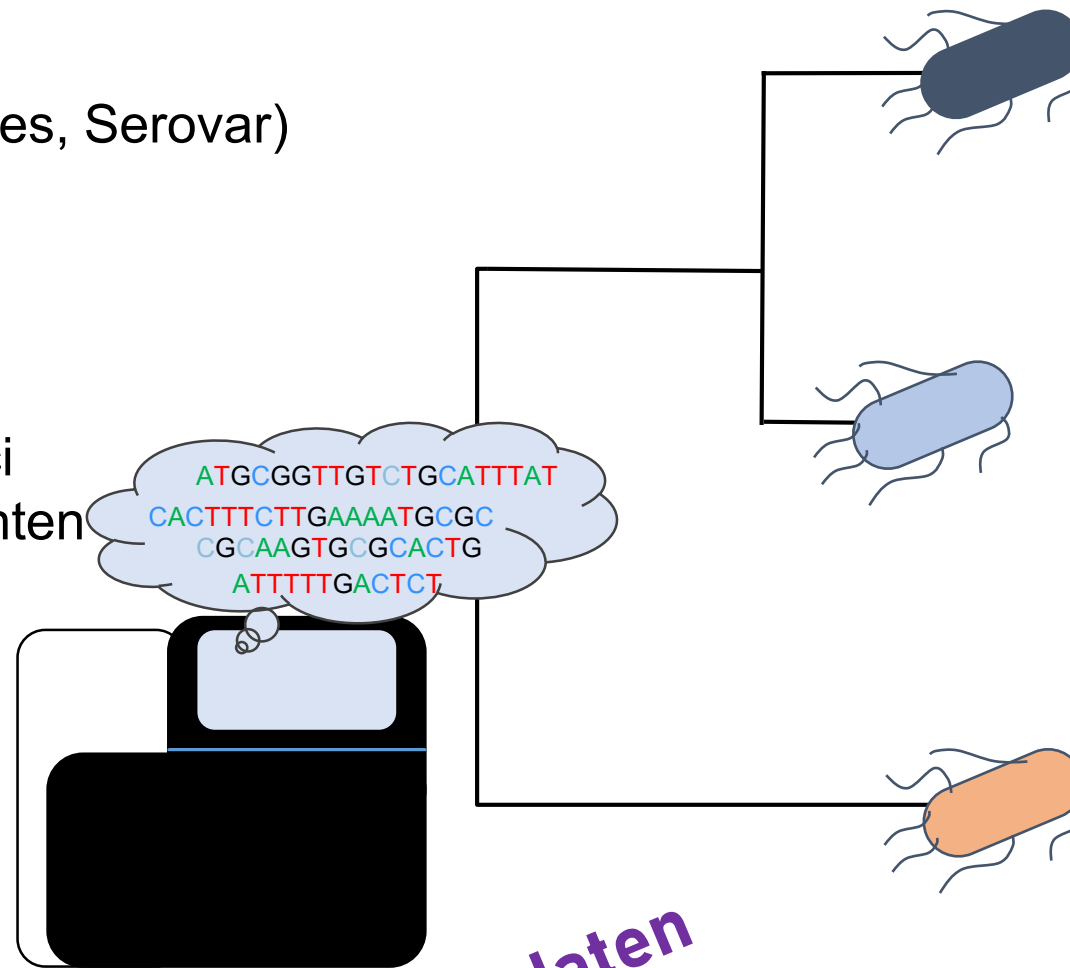
Epidemiologie und
Rückverfolgung

- Befragungen
- Warenketten
- Inspektionen
- ...

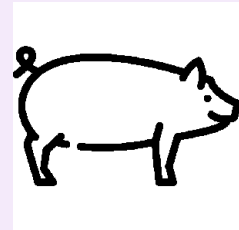
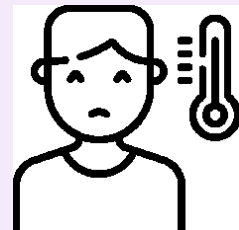
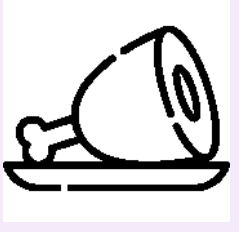


Genom-basierte Typisierung

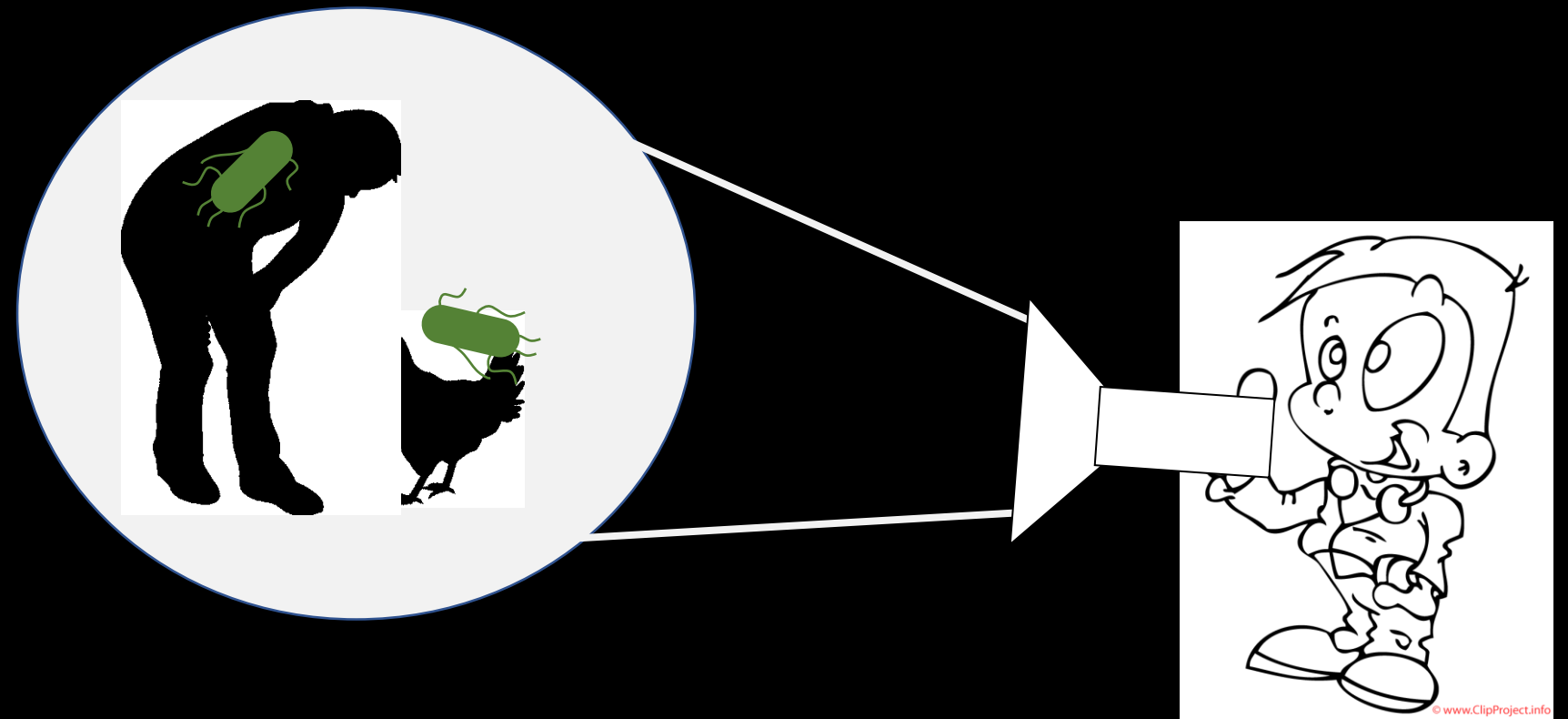
- Typisierung (Spezies, Subspezies, Serovar)
- Detektion von
 - Antibiotikaresistenzgenen
 - Virulenzgenen
 - Serotyp-bestimmenden Loci
 - Plasmiden/ mobilen Elementen
 - Impfstamm-Markern
- phylogenetische Analysen / Clusterbestimmung



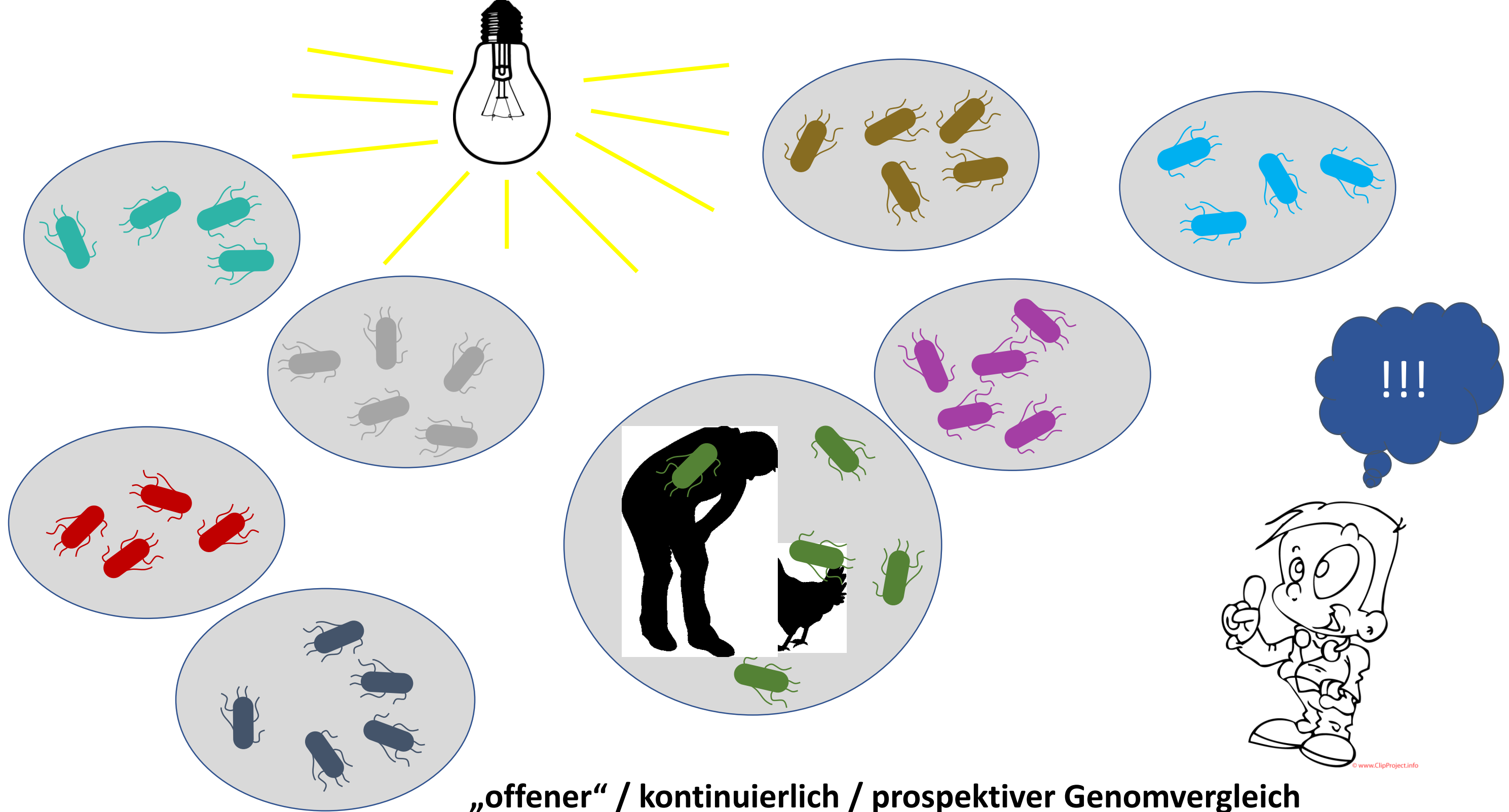
Sequenzdaten

Matrix	Bundesland	Datum
	BW	02.03.21
	BW	15.03.21
	BY	22.02.21

Epi-daten /
Metadaten



„gezielter“ / anlassbezogener / reaktiv Genomvergleich

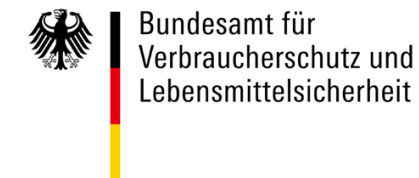
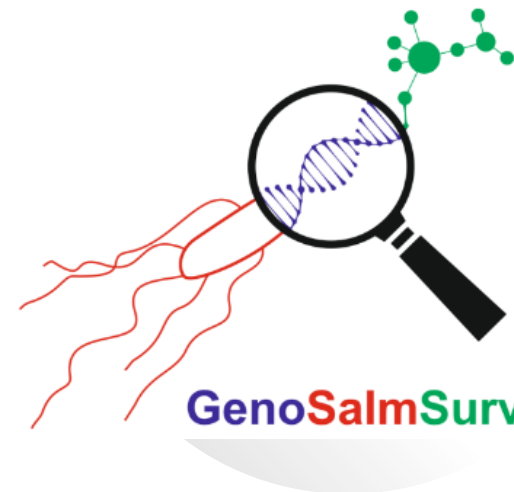




das Projekt



ROBERT KOCH INSTITUT



Ziel: Aufbau einer integrierten genombasierten Surveillance für *Salmonellen* für den ,offenen' Genomvergleich



Zusammenführung der Genom-basierten Typisierungsdaten mit epidemiologischen Daten, sowie Daten der Lebensmittel-und Veterinärbehörden

GenoSalmSurv screencasts

das Projekt

1

die Pipelines

AQUAMIS und die QC Entscheidung

Allele calling with chewieSnake

Gemeinsame GenoSalmSurv Datenbank

Metachewiereport + Interpretation

6

Demo einer Ausbruchsanalyse

7

Installationshilfe

8

